

ARM MPU AM437X Industrial EVM  
ZDN Package

- See the Hardware User Guide for board details
- See the Errata Document for design Issues
- See the PCB Build Specification for PCB Details



ARM MPU

Texas Instruments, Inc.

ARM MPU Business Unit  
12500 TI Blvd  
Dallas, TX 75243

TEXAS  
INSTRUMENTS

AM437x Industrial EVM

Final

Title Page

Size

Document Number

Modified By

Rev

C

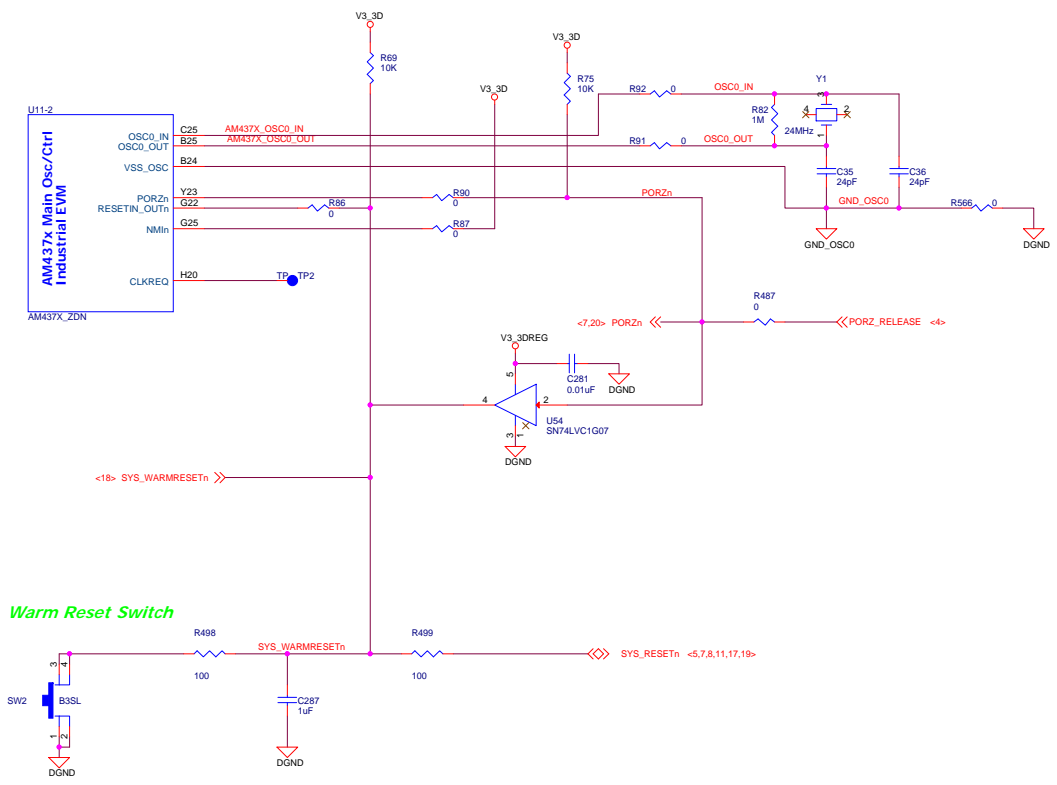
am437x\_industrial\_erm\_3k0008.dsn

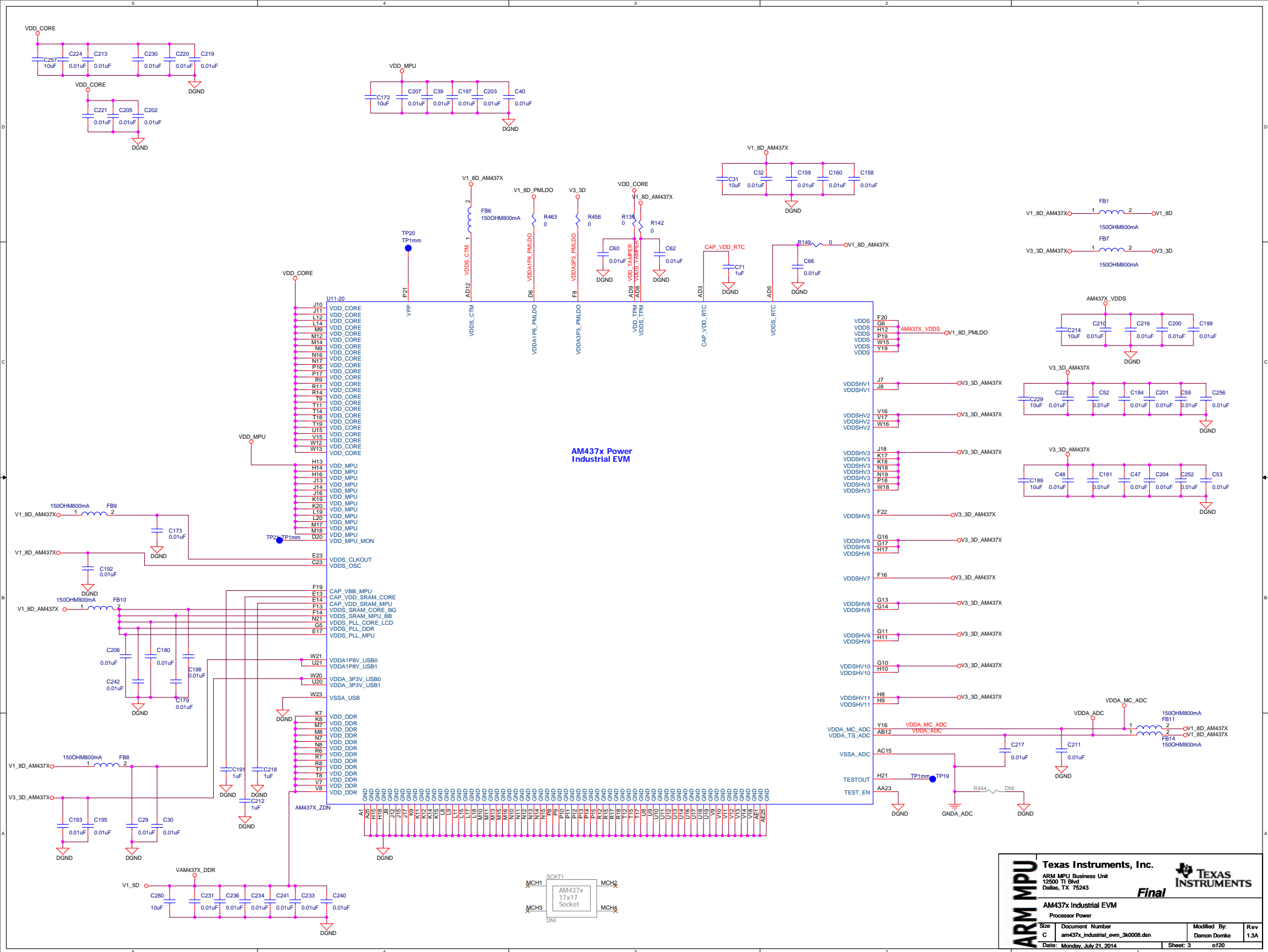
Damon Domke

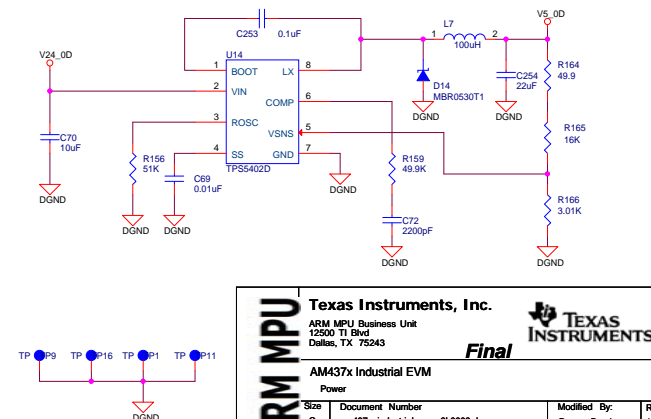
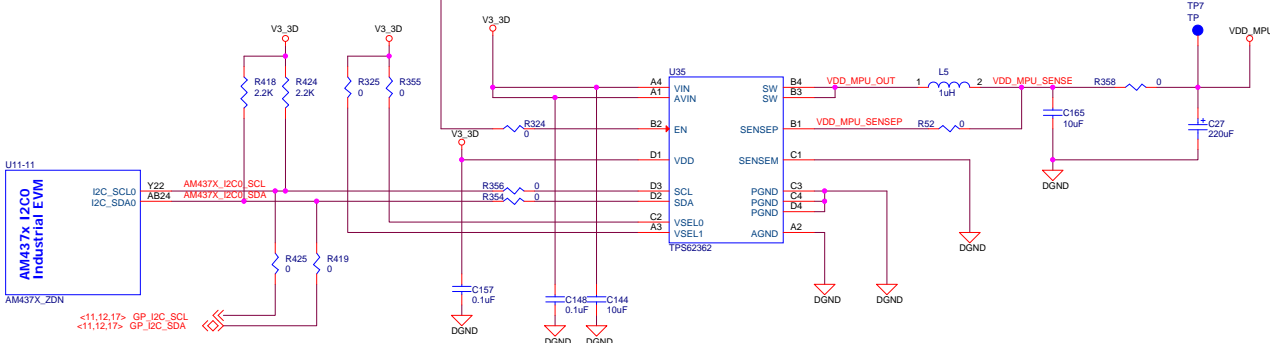
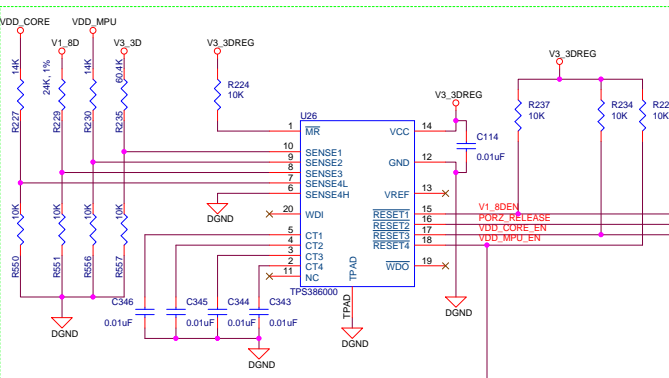
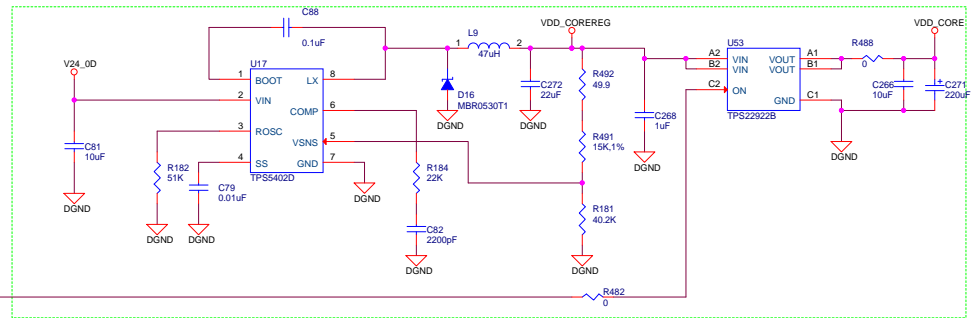
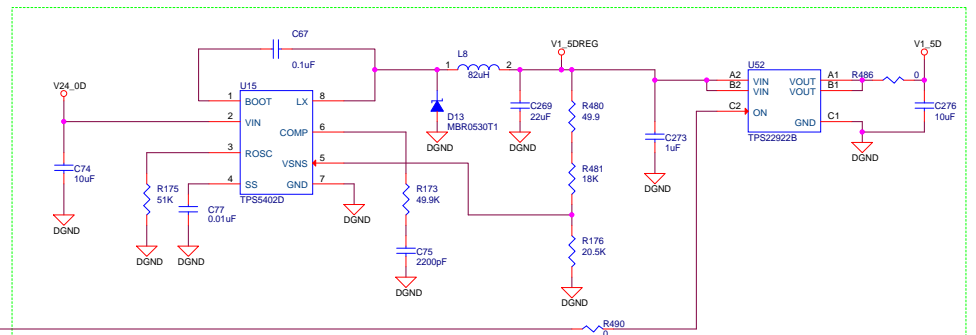
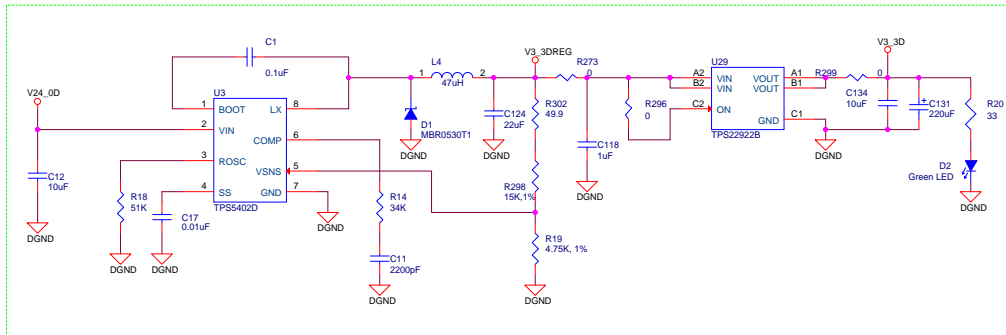
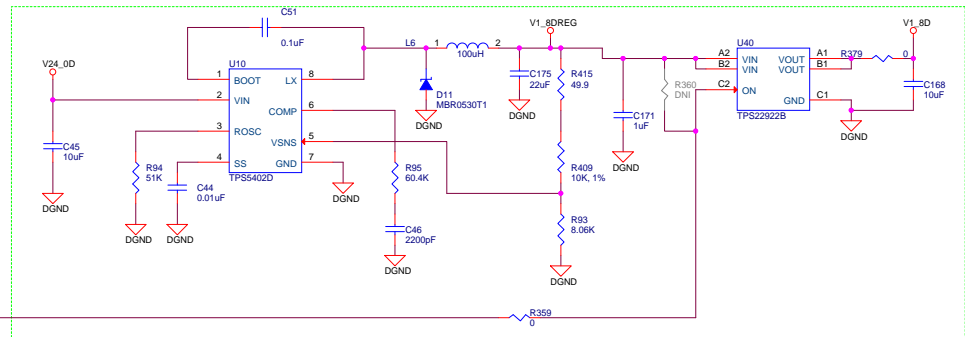
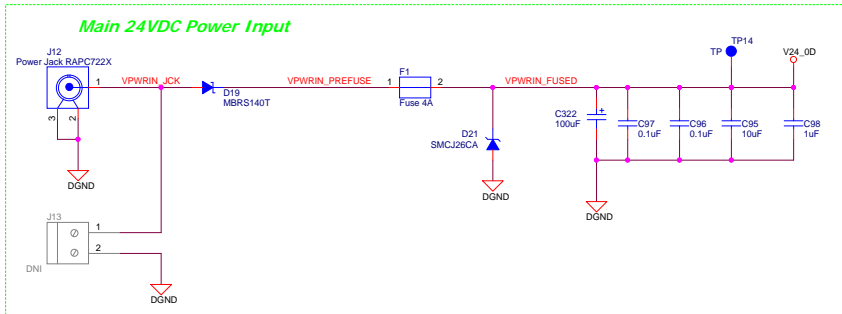
1.3A

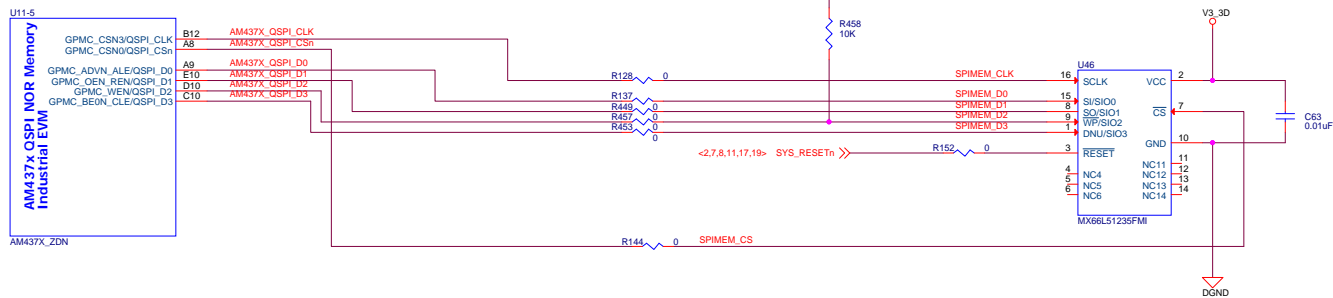
Date: Wednesday, August 27, 2014

Sheet: 1 of 20



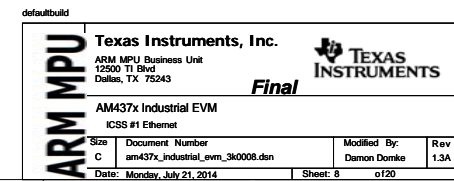




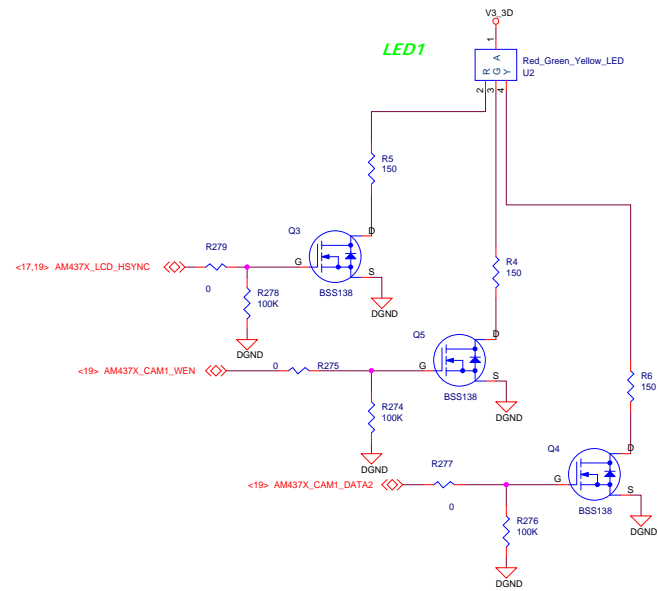
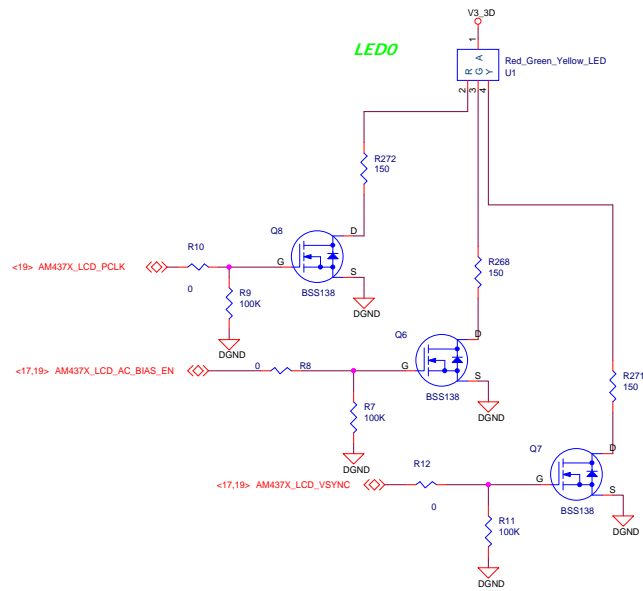


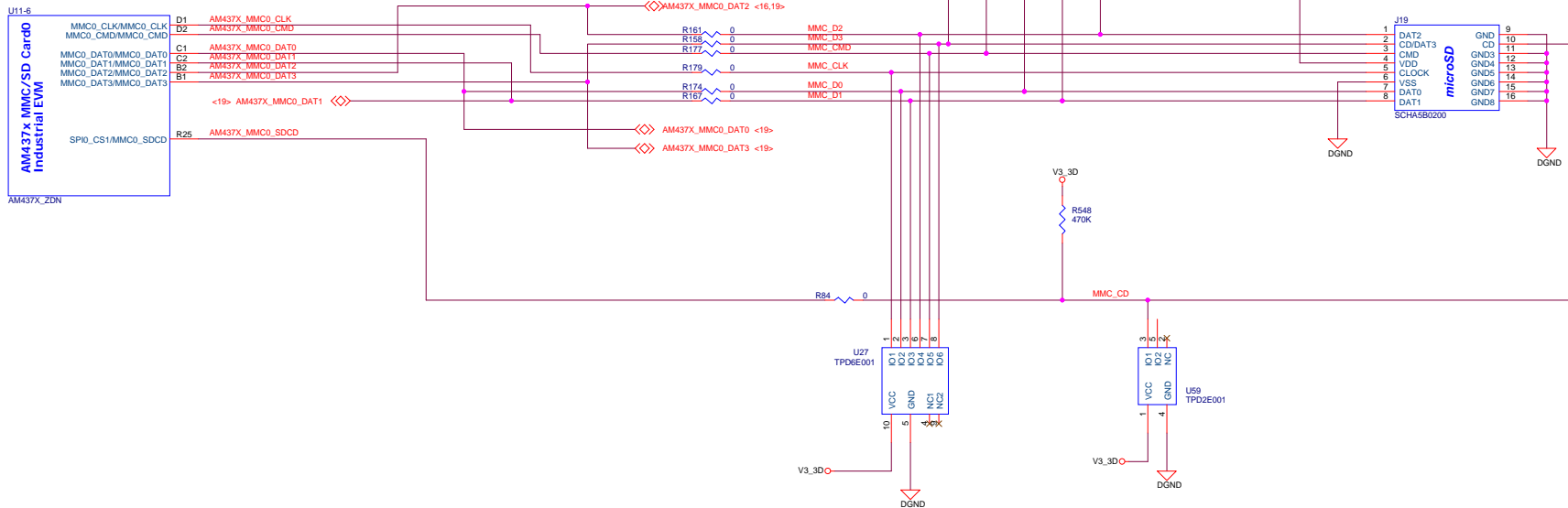


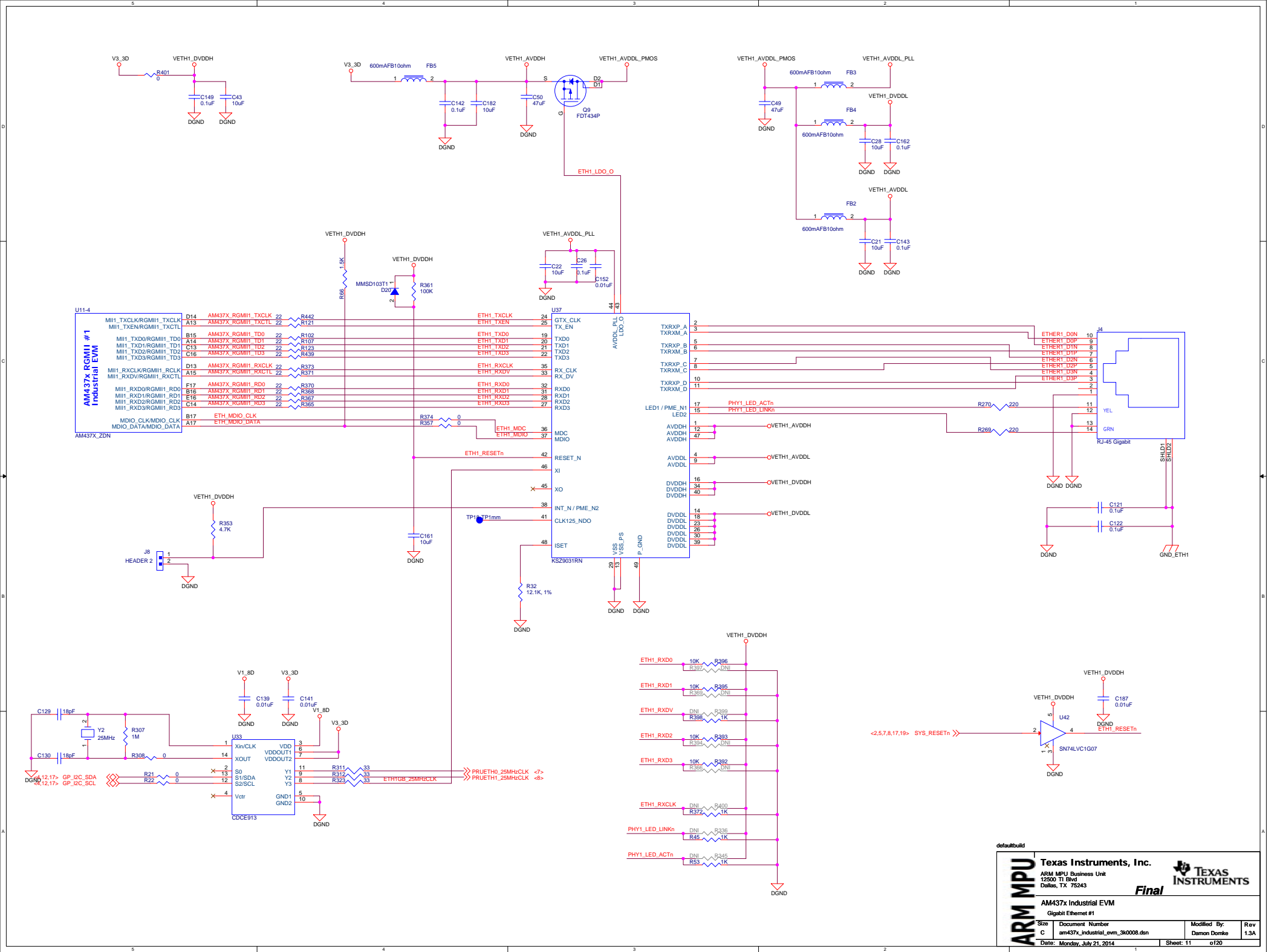


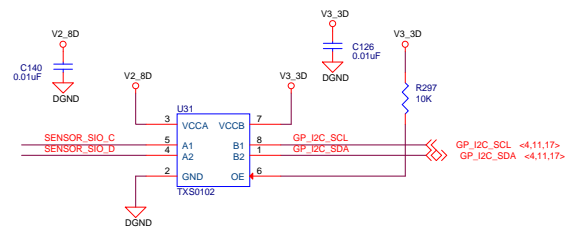
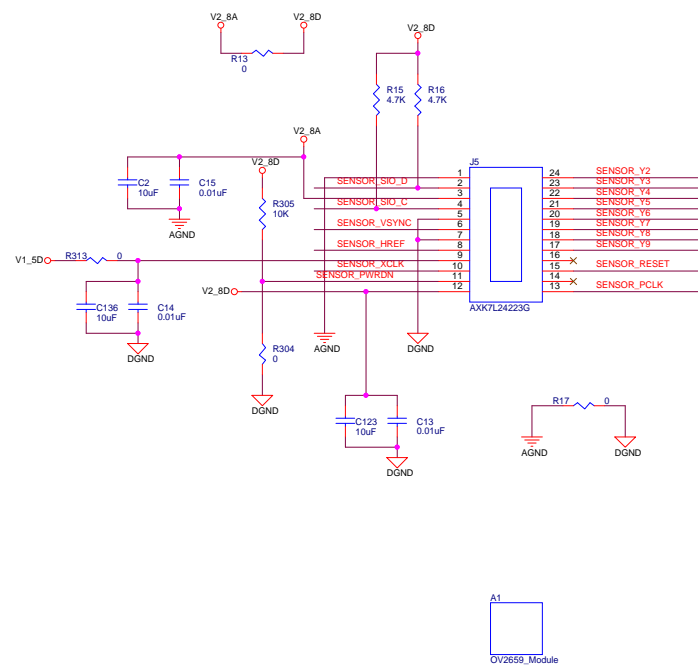
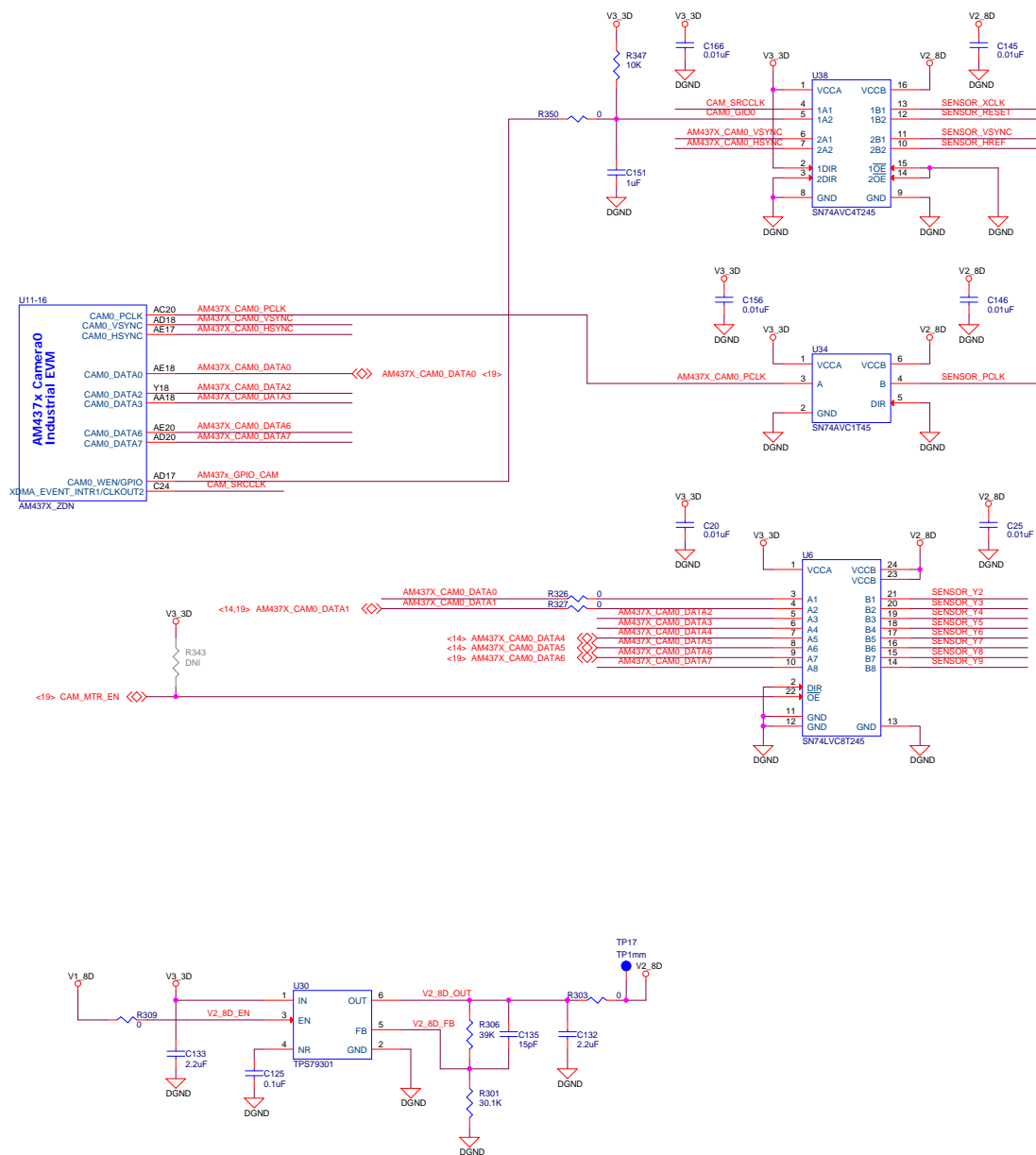


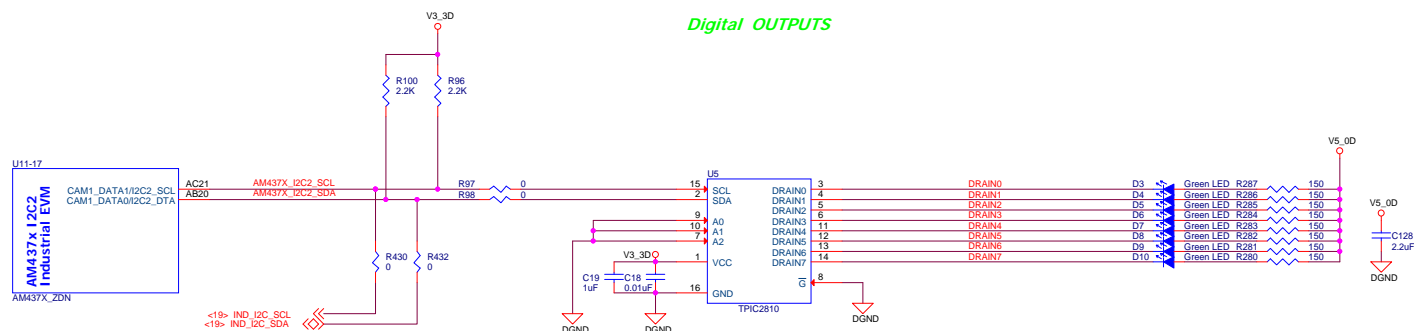
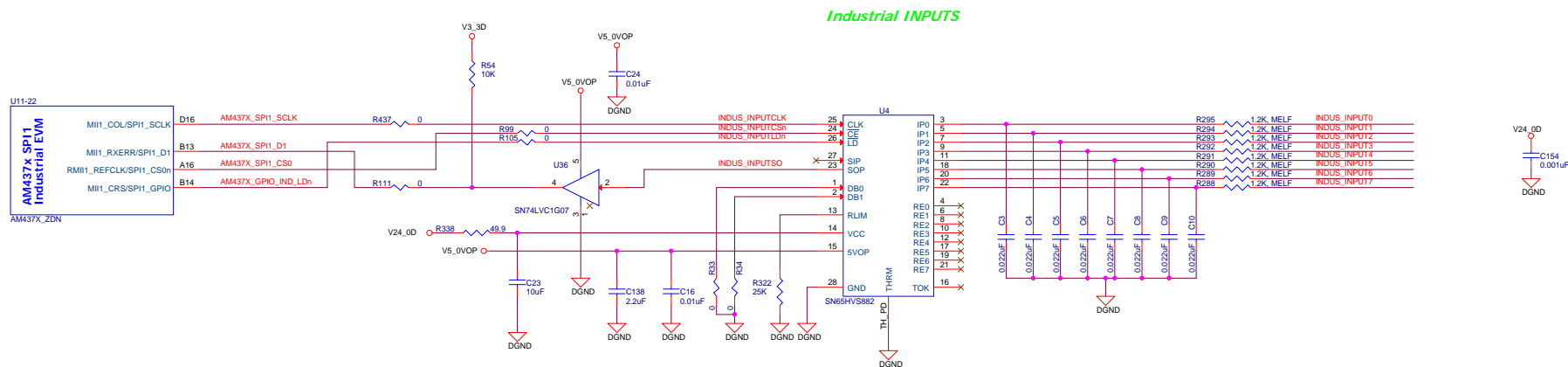






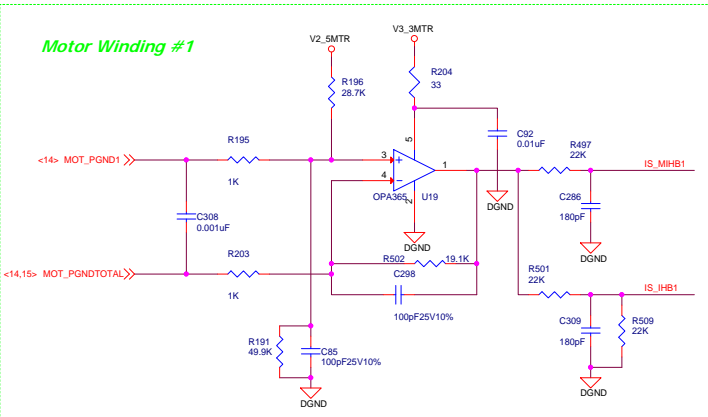




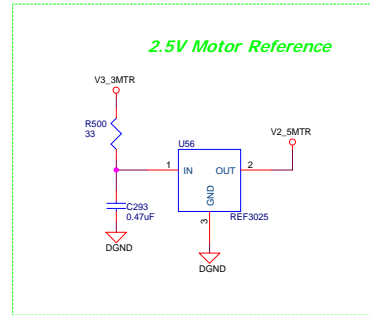




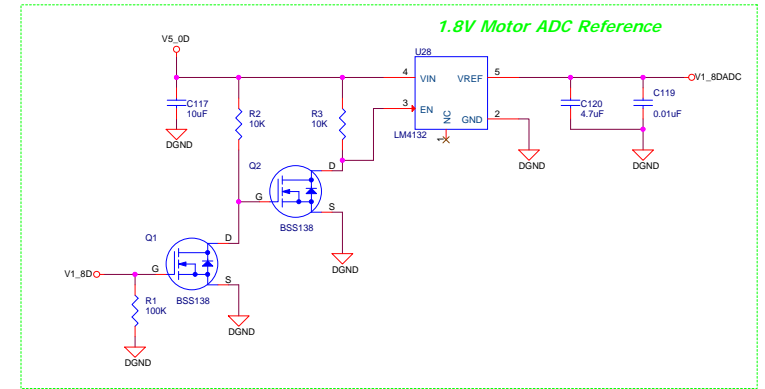
### Motor Winding #1



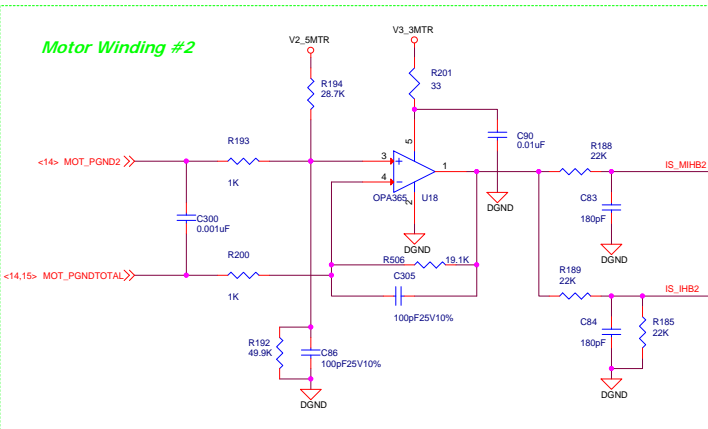
### 2.5V Motor Reference



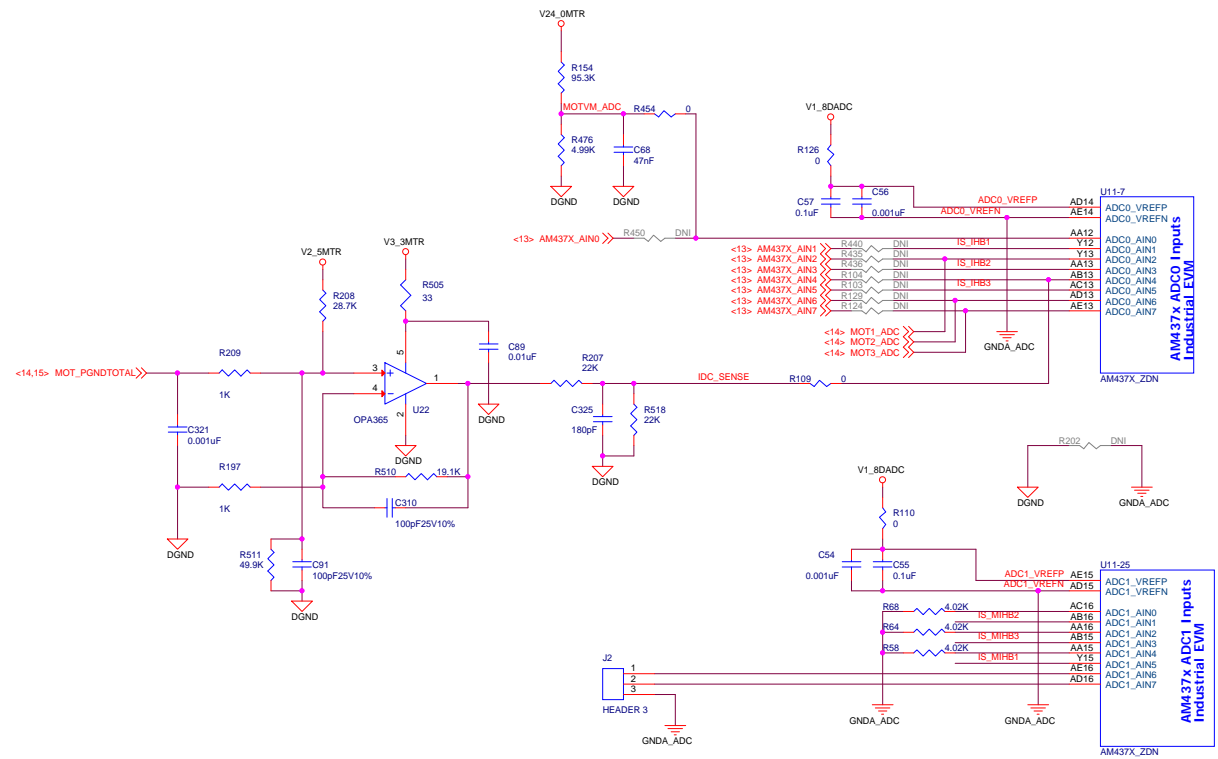
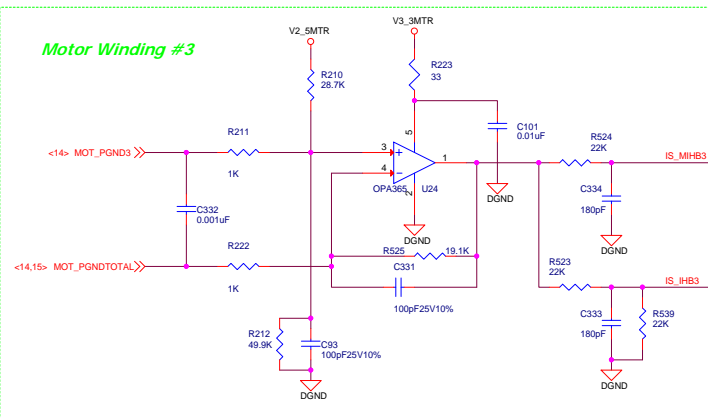
### 1.8V Motor ADC Reference

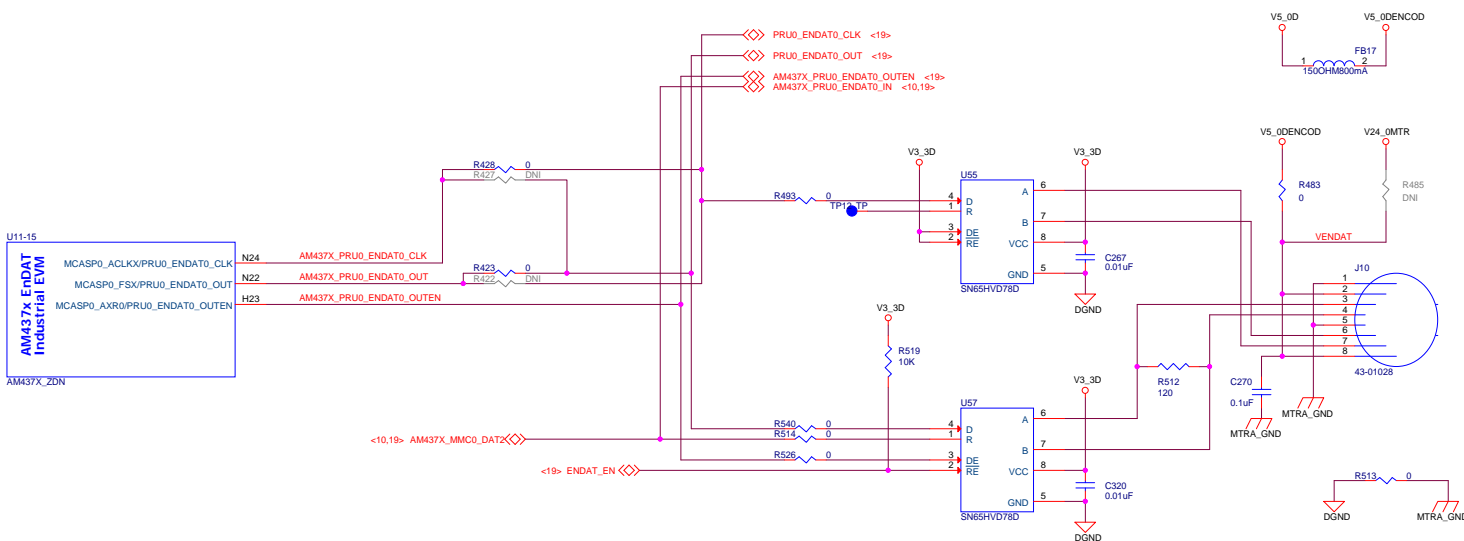
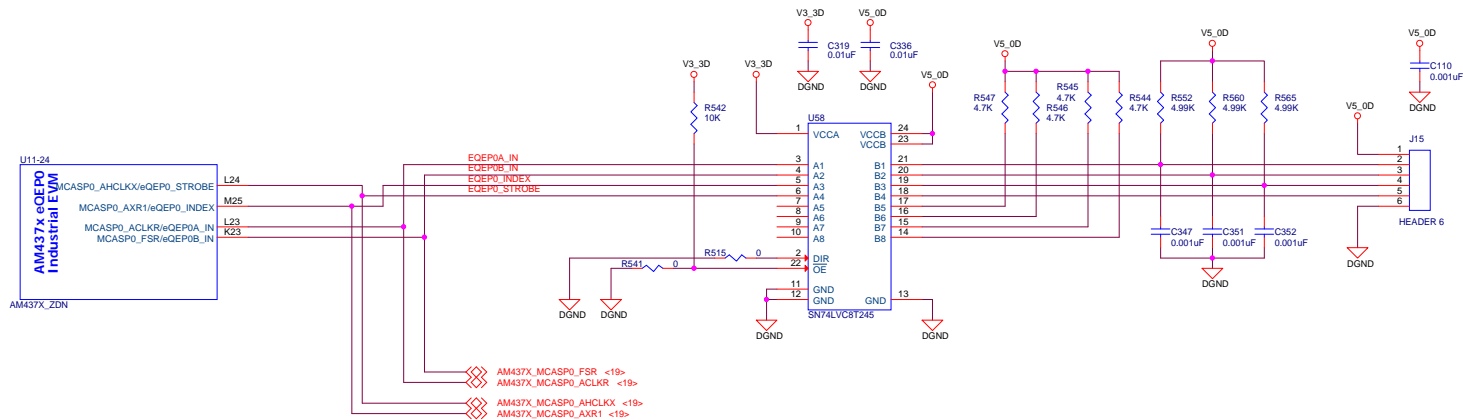


### Motor Winding #2



### Motor Winding #3







### ID Memory

<4,11,12> GP\_I2C\_SCL  
<4,11,12> GP\_I2C\_SDA

U32  
SCL VCC  
SDA  
VSS  
A0  
A1  
A2  
WP  
CAT24C256W

V3\_3D  
C127 0.01µF  
R300  
DNI

DGND

